

(b) Fig. 3.2 shows part of the epithelium that lines the trachea.

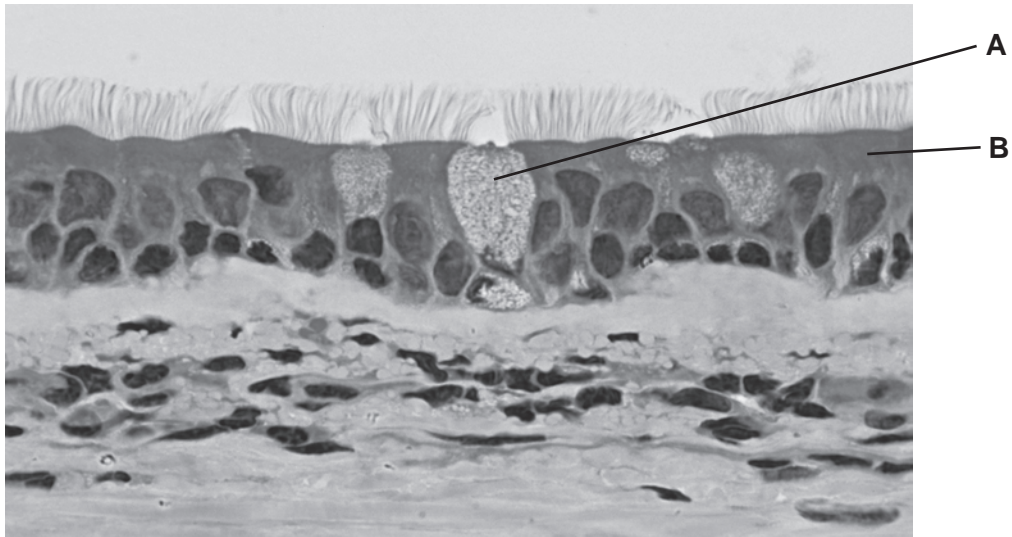


Fig. 3.2

Explain how the cells labelled **A** and **B** in Fig. 3.2 protect the gas exchange system.

A

.....

.....

.....

B

.....

.....

..... [4]

[Total: 10]

2 Fig. 3.1 shows structures in the human thorax.

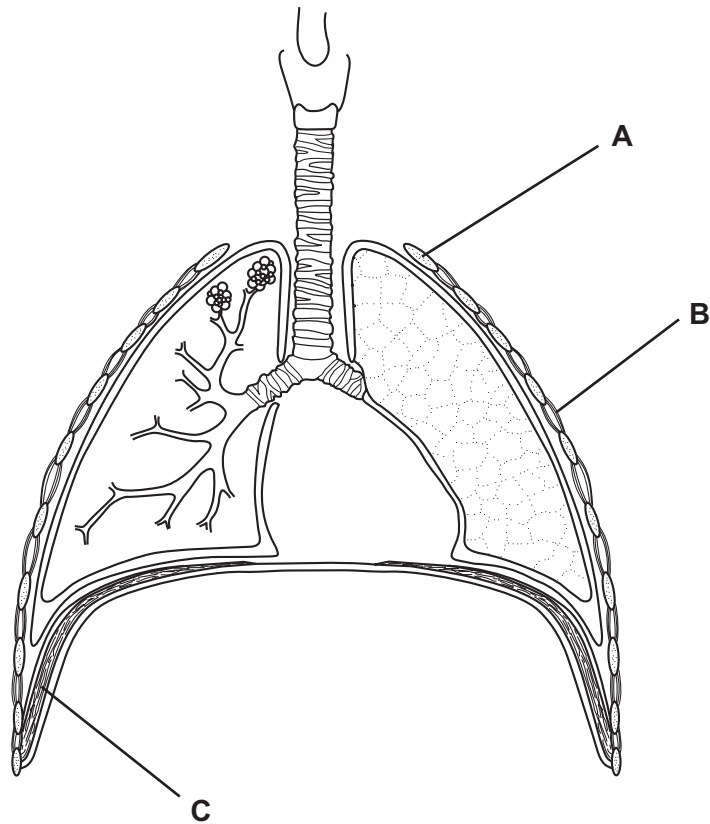


Fig. 3.1

(a) Complete the table by identifying parts **A**, **B** and **C** and describing their roles in breathing in.

part	name	role in breathing in
A
B
C

[6]

Fig. 3.2 shows some cells from the lining of the bronchus.

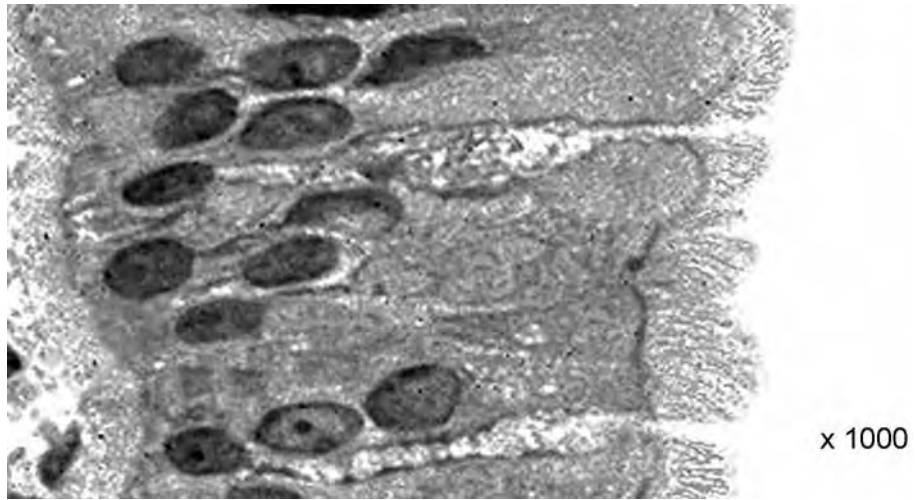


Fig. 3.2

(b) (i) Explain how these cells help to keep the bronchus free from dust and bacteria.

.....

.....

.....

.....

..... [4]

(ii) Describe how the actions **one named**
compound of tobacco smoke.

.....

.....

..... [2]

[Total: 12]